




















IDK-LOK

Fittings & Valves

DK-Lok High Pressure Series

No.08-1
July 2015



High Pressure Needle Valve		High Pressure Fitting		High Pressure Union & Adapter				
Straight DK-NV		04	Elbow DK-L		07	Female Union DK-FAU		10
		04	Tee DK-T			07		Male Union DK-MAU
Angle DK-NV-A		04	Cross DK-X			08	Female Union Reducer DK-FARU	
		05	High Pressure Fitting Accessory		08	Male Union Reducer DK-MAUR		
3 Way One Pressure DK-NV-O		05	Gland DK-G		08	Male Adapter * Female Adapter DK-MAFA		
		05	Collar DK-C			08	Female Adapter * Female Thread DK-FAF	
3 Way Two Pressure DK-NV-T		05	Sleeve DK-S			08	Male Adapter * Female Thread DK-MAF	
		09	Tube DK-TL			09	Female Adapter * Male Thread DK-FAM	
High Pressure Check Valve DK-CV		06	Nipple DK-N			09	Male Adapter * Male Thread DK-MAM	

High Pressure Equipment

Tooling		18
----------------	---	----

DK-Lok High Pressure Series

General

- DK-Lok Corporation is specialized in the manufacturing of Instrument Fitting and Valve. The DK HP Series has been developed to satisfy customer requests for high pressure application.
- DK MP & HP Fittings and Valves are manufactured from 316 cold-worked stainless steel meeting NACE MR 0175.
- DK HP Valves are designed to operate safely and reliably against Medium Pressure for 20,000 psig service and High Pressure for 30,000 through 60,000 psig service and Ultra High Pressure for 100,000 through 150,000 psig service.
- Cone & thread design

				
Low Pressure Sleeve 5,500 psig ~ 11,500 psig	Medium Pressure Collar 20,000 psig	High Pressure Collar 30,000 psig	High Pressure Collar 60,000 psig	Ultra high Pressure Collar 100,000 psig ~ 150,000 psig

Working Pressure and size table

Type	Pressure	Tube Size						
		1/8"	1/4"	3/8"	1/2"	9/16"	3/4"	1"
NPT & PT thread	15,000	0	0	0	0			
	10,000						0	0
Low Pressure ¹⁾	11,000	0						
	11,500		0					
	7,500			0				
	5,500				0			
Medium Pressure	20,000		0	0		0	0	0
High Pressure	30,000	0	0	0		0		
	60,000		0			0		
Ultra-high Pressure	100,000		0					
	150,000			0				

Note : 1) Low pressure is according to tube thickness. See page 9 .

Application

- DBB
- High Pressure Test Equipment
- Subsea
- Chemical injection System

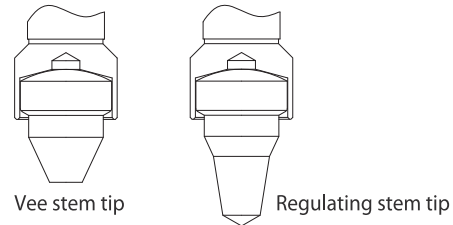
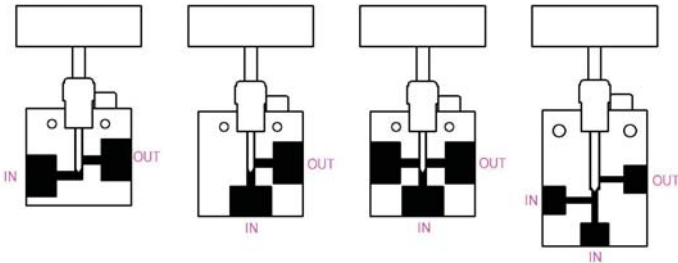


High Pressure Needle Valve

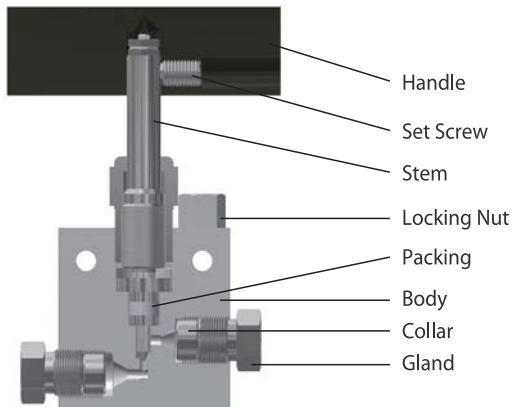


Features

- Flow patterns are straight angle 3 way-1 inlet port, and 3 way-2 inlet ports.
- Non-rotating stem tip prevents thread galling and assures long life cycle.
- Temperature range is from -100 °F to 600 °F (-73°C to 315°C) with standard PTFE packing and -100 °F to 600 °F (-73°C to 315°C) with optional Graphite packing.
- Stem tip are standard "Vee" and optional "Regulating" available.



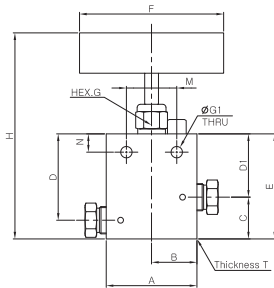
Material of Construction



Parts	Materials
Handle	Aluminum
Set Screw	Stainless Steel
Stem	ASTM A564 TYPE630
Locking Nut	ASTM A276 TYPE304
Packing	PTFE optional Graphite
Body	ASTM A276 TYPE316L
Collar	ASTM A276 TYPE304
Gland	ASTM A276 TYPE304

Straight

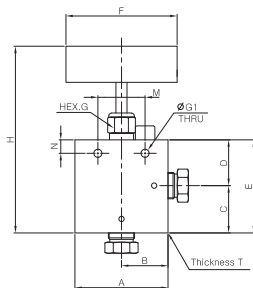
DK-NV



Part No.	Pressure Rating	Tube Size	CV	Orifice Size	Dimensions												
					A	B	C	D	D1	E	F	G	G1	H	M	N	T
DK11NV-02	11,000psi	1/8"	0.12	2.39	38	19	22	30	23	45	50	13	5	82	12.8	8	20
DK11NV-04	11,500psi	1/4"	0.2	3.18	50	25	20	40.3	30	50	80	17	6	118.2	15.6	9.7	20
DK07NV-06	7,500psi	3/8"	0.2	3.18	50	25	20.5	40.3	29.5	50	80	17	6	116.9	15.7	9.7	20
DK05NV-08	5,500psi	1/2"	1.62	7.54	63	31.5	30.5	60.5	44.5	75	100	24	9	151.8	17.5	12.7	25
DK20NV-04	20,000psi	1/4"	0.31	3.18	50	25	20	40.3	30	50	80	17	6	118.2	15.7	9.7	20
DK20NV-06		3/8"	0.75	5.56	50	25	20	40.3	30	50	80	17	6	116.9	15.7	9.7	20
DK20NV-09		9/16"	1.3	7.94	63	31.5	29	60	44	73	80	22	8	143.1	15.7	12.7	25
DK20NV-12		3/4"	2.29	11.1	76	38	38	76	57	95	260	30	10	177.8	46	15.8	35
DK20NV-16		1"	4.78	14.3	105	52.5	46	96	72	118	260	41	14	214.8	63.5	28.5	45
DK30NV-02	30,000psi	1/8"	0.03	1.59	38	19	22	30	23	45	50	13	5	82.2	12.8	8	20
DK30NV-04		1/4"	0.12	2.4	50	25	21	43	33	54	80	20	6	114.9	17	9.7	25
DK30NV-06		3/8"	0.2	3.2	50	25	24	43	33	57	80	20	6	115.6	17	9.7	25
DK30NV-09		9/16"	0.33	3.2	67	33.5	29	43	33	62	80	20	6	130.3	17	9.7	38
DK60NV-04	60,000psi	1/4"	0.08	1.8	50	25	21	43	33	54	80	20	6	121.4	17	9.7	25
DK60NV-06		3/8"	0.09	1.8	50	25	24	43	33	57	80	20	6	124.9	17	9.7	25
DK60NV-09		9/16"	0.14	2	67	33.5	29	43	33	62	80	20	6	127.4	17	9.7	38
DK100NV-04	100,000psi	1/4"	0.09	1.59	67	33.5	30.5	44	33	63.5	100	24	6	132.4	20	9.7	38
DK150NV-06	150,000psi	3/8"	0.06	1.59	90	45	30	42	34	64	100	24	7	135	19	12.7	38

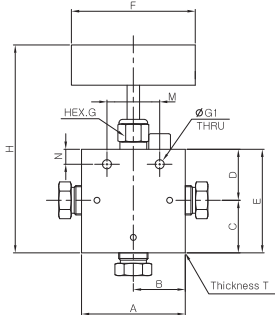
Angle

DK-NV-A



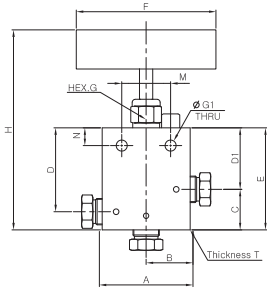
Part No.	Pressure Rating	Tube Size	CV	Orifice Size	Dimensions												
					A	B	C	D	E	F	G	G1	H	M	N	T	
DK11NV-02-A	11,000psi	1/8"	0.12	2.39	38	19	22	23	45	50	13	5	82	12.8	8	20	
DK11NV-04-A	11,500psi	1/4"	0.2	3.18	50	25	32	30	62	80	17	6	130.2	15.6	9.7	20	
DK07NV-06-A	7,500psi	3/8"	0.2	3.18	50	25	32	30	62	80	17	6	128.9	15.7	9.7	20	
DK05NV-08-A	5,500psi	1/2"	1.62	7.54	63	31.5	41.5	44.5	86	100	24	9	162.8	17.6	12.7	25	
DK20NV-04-A	20,000psi	1/4"	0.31	3.18	50	25	32	30	62	80	17	6	130.2	15.7	9.7	20	
DK20NV-06-A		3/8"	0.75	5.56	50	25	32	30	62	80	17	6	128.9	15.7	9.7	20	
DK20NV-09-A		9/16"	1.3	7.94	63	31.5	25.5	44.5	70	80	22	8	155.6	15.7	12.7	25	
DK20NV-12-A		3/4"	2.29	11.1	76	38	50.8	57.2	108	260	30	10	191	46	15.8	35	
DK20NV-16-A		1"	4.78	14.3	105	52.5	65	73	138	260	41	14	238.1	63.5	28.5	45	
DK30NV-02-A	30,000psi	1/8"	0.03	1.59	38	19	22	23	45	50	13	5	82.2	12.8	8	20	
DK30NV-04-A		1/4"	0.12	2.4	50	25	33.5	28.5	62	80	20	6	126.4	17.2	9.7	25	
DK30NV-06-A		3/8"	0.2	3.2	50	25	33.5	28.5	62	80	20	6	126.5	17.2	9.7	25	
DK30NV-09-A		9/16"	0.33	3.2	67	33.5	33.5	28.5	62	80	20	6	130.3	17.2	9.7	38	
DK60NV-04-A	60,000psi	1/4"	0.08	1.8	50	25	27.5	33	60.5	80	20	6	127.9	17	9.7	25	
DK60NV-06-A		3/8"	0.09	1.8	50	25	33.5	33	66.5	80	20	6	134.4	17	9.7	25	
DK60NV-09-A		9/16"	0.14	2	67	33.5	35.5	31.5	67	80	20	6	134.4	17	9.7	38	
DK100NV-04-A	100,000psi	1/4"	0.09	1.59	67	33.5	32	30	62	100	24	6	130.2	20	9.7	38	
DK150NV-06-A	150,000psi	3/8"	0.06	1.59	90	45	32	30	62	100	24	7	130.2	19	12.7	38	

3Way One Pressure DK-NV-O



Part No.	Pressure Rating	Tube Size	CV	Orifice Size	Dimensions												
					A	B	C	D	E	F	G	G1	H	M	N	T	
DK11NV-02-O	11,000psi	1/8"	0.12	2.39	38	19	22	23	45	50	13	5	82	12.8	8	20	
DK11NV-04-O	11,500psi	1/4"	0.2	3.18	50	25	32	30	62	80	17	6	130.2	15.6	9.7	20	
DK07NV-06-O	7,500psi	3/8"	0.2	3.18	50	25	32	30	62	80	17	6	128.9	15.7	9.7	20	
DK05NV-08-O	5,500psi	1/2"	1.62	7.54	63	31.5	41.5	44.5	86	100	24	9	162.8	17.5	12.7	25	
DK20NV-04-O	20,000psi	1/4"	0.31	3.18	50	25	32	30	62	80	17	6	130.2	15.7	9.7	20	
DK20NV-06-O		3/8"	0.75	5.56	50	25	32	30	62	80	17	6	128.9	15.7	9.7	20	
DK20NV-09-O		9/16"	1.3	7.94	63	31.5	41	45	86	80	22	8	155.1	15.7	12.7	25	
DK20NV-12-O		3/4"	2.29	11.1	76	38	50.8	57.2	108	260	30	10	191	46	15.8	35	
DK20NV-16-O		1"	4.78	14.3	105	52.5	65	73	138	260	41	14	238.1	63.5	28.5	45	
DK30NV-02-O	30,000psi	1/8"	0.03	1.59	38	19	22	23	45	50	13	5	82.2	12.8	8	20	
DK30NV-04-O		1/4"	0.12	2.4	50	25	33.5	28.5	62	80	20	6	126.4	17.2	9.7	25	
DK30NV-06-O		3/8"	0.2	3.2	50	25	33.5	28.5	62	80	20	6	126.4	17.2	9.7	25	
DK30NV-09-O		9/16"	0.33	3.2	67	33.5	33.5	28.5	62	80	20	6	130.3	17.2	9.7	38	
DK60NV-04-O	60,000psi	1/4"	0.08	1.8	50	25	27.5	33	60.5	80	20	6	127.9	17	9.7	25	
DK60NV-06-O		3/8"	0.09	1.8	50	25	37	33	70	80	20	6	137.4	17	9.7	25	
DK60NV-09-O		9/16"	0.14	2	67	33.5	35.5	32	67	80	20	6	134.4	17	9.7	38	
DK100NV-04-O	100,000psi	1/4"	0.09	1.59	67	33.5	32	30	62	100	24	6	130.2	20	9.7	38	
DK150NV-06-O	150,000psi	3/8"	0.06	1.59	90	45	32	30	62	100	24	7	130.2	19	12.7	38	

3Way Two Pressure DK-NV-T



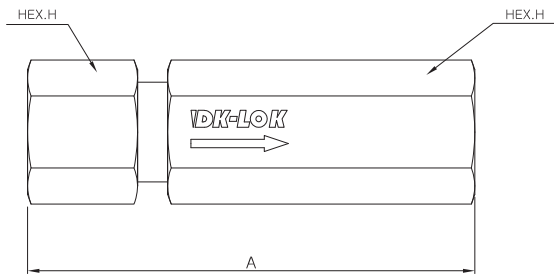
Part No.	Pressure Rating	Tube Size	CV	Orifice Size	Dimensions												
					A	B	C	D	D1	E	F	G	G1	H	M	N	T
DK11NV-02-T	11,000psi	1/8"	0.12	2.39	38	19	22	30	23	45	50	13	5	82	12.8	8	20
DK11NV-04-T	11,500psi	1/4"	0.2	3.18	50	25	36.5	41	30	66.5	80	17	6	134.8	15.6	9.7	20
DK07NV-06-T	7,500psi	3/8"	0.2	3.18	50	25	36.5	41	30	66.5	80	17	6	133.3	15.7	9.7	20
DK05NV-08-T	5,500psi	1/2"	1.62	7.54	63	31.5	47.5	60.5	44.5	92	100	24	9	168.8	17.5	12.7	25
DK20NV-04-T	20,000psi	1/4"	0.31	3.18	50	25	36.5	41	30	66.5	80	17	6	134.7	15.7	9.7	20
DK20NV-06-T		3/8"	0.75	5.56	50	25	36.5	41	30	66.5	80	17	6	133.3	15.7	9.7	20
DK20NV-09-T		9/16"	1.3	7.94	63	31.5	47.5	60	44.5	92	80	22	8	159.9	15.7	12.7	25
DK20NV-12-T		3/4"	2.29	11.1	76	38	60.3	50.8	57.2	117.5	260	30	10	200	46	15.8	35
DK20NV-16-T		1"	4.78	14.3	105	52.5	77.8	95	71.2	149	260	41	14	247.6	63.5	28.5	45
DK30NV-02-T	30,000psi	1/8"	0.03	1.59	38	19	22	30	23	45	50	13	5	87.2	12.8	8	20
DK30NV-04-T		1/4"	0.12	2.4	50	25	33.5	38	28.5	62	80	20	6	126.4	17.2	9.7	25
DK30NV-06-T		3/8"	0.2	3.2	50	25	35	38	28.5	63.5	80	20	6	127.9	17.2	9.7	25
DK30NV-09-T		9/16"	0.33	3.2	67	33.5	50.5	39.5	28.5	79	80	20	6	141.3	17.2	9.7	38
DK60NV-04-T	60,000psi	1/4"	0.08	1.8	50	25	27.2	43	33	60.5	80	20	6	127.9	17	9.7	25
DK60NV-06-T		3/8"	0.09	1.8	50	25	38.5	43	33	71.5	80	20	6	138.9	17	9.7	25
DK60NV-09-T		9/16"	0.14	2	67	33.5	45.5	41	31.5	77	80	20	6	144.4	17	9.7	38
DK100NV-04-T	100,000psi	1/4"	0.09	1.59	67	33.5	36.5	41	30	66.5	100	24	6	134.7	20	9.7	38
DK150NV-06-T	150,000psi	3/8"	0.06	1.59	90	45	36.5	41	30	66.5	100	24	7	134.7	19	12.7	38

High Pressure Check Valve

Features

- Reverse flow prevention which fully leak-tight performance.
- Two sealing Type : Standard FKM O-ring seat is excellent fast shut-off, Other material is available.
Optional tungsten carbide Ball seat is metal to metal and continuous cycling.
- Spring material is stainless steel.
- Check valve that facilitates one-directional movement by blocking the reverse flow of gas or liquid.

Check Valve DK-CV



Part No.	Pressure Rating	Tube Size	Orifice Size	Dimensions	
				A	HEX.H
DK11CV-02	11,000 psi	1/8"	1.4	68	22
DK11CV-04	11,500 psi	1/4"	3.2	81	25.4
DK07CV-06	7,500 psi	3/8"	5	93	35
DK05CV-08	5,500 psi	1/2"	8.35	108	41
DK20CV-04	20,000 psi	1/4"	2.8	77	25
DK20CV-06		3/8"	5.2	91	25
DK20CV-09		9/16"	5	107	35
DK20CV-12		3/4"	5	131	41
DK20CV-16		1"	6	165	55
DK30CV-02	30,000 psi	1/8"	1.2	66	20
DK60CV-04	60,000 psi	1/4"	2.4	85	32
DK60CV-06		3/8"	3.2	100	36
DK60CV-09		9/16"	4.8	118	38
DK100CV-04	100,000 psi	1/4"	2.4	129	ø 50

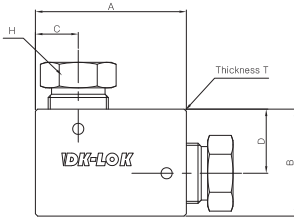
High Pressure Fittings

Features

- Flow patterns are elbow, tee, and cross.
- Temperature range is from -423 °F to 1,200 °F (-252°C to 649°C).
- Unless otherwise noted, it is supplied with standard grand and collar is assembled.

Elbow

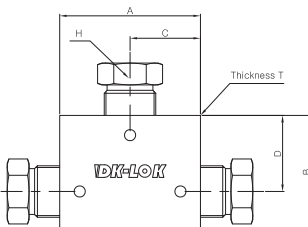
DK-L



Part No.	Pressure Rating	Tube Size	Orifice Size	Dimensions					
				A	B	C	D	H	T
DK11L-02	11,000psi	1/8"	1.4	25	25	7	19	12	15.5
DK11L-04	11,500psi	1/4"	4	35	35	10	25	16	20
DK07L-06	7,500psi	3/8"	5.5	35	35	10	25	17	20
DK05L-08	5,500psi	1/2"	8.5	45	45	13.5	31.5	25.4	25
DK20L-04	20,000psi	1/4"	2.8	30	25	8	17.5	12	16
DK20L-06		3/8"	5.2	35	35	10	25	16	20
DK20L-09		9/16"	9.1	45	45	13.5	31.5	22	25
DK20L-12		3/4"	1.3	57	57	19	38	27	35
DK20L-16		1"	17.5	76	76	23.5	52.5	36	45
DK30L-02	30,000psi	1/8"	1.16	28	28	9	19	13	20
DK30L-16		1"	11.1	76	76	23.5	52.5	36	45
DK60L-04	60,000psi	1/4"	2.4	35	35	12.5	22.5	16	25
DK60L-06		3/8"	3.2	45	38	13.5	25	20	25
DK60L-09		9/16"	4.8	67	47.5	19	28.5	30	38
DK100L-04	100,000psi	1/4"	2.4	44.5	44.5	13	31.5	16	25
DK150L-06	150,000psi	3/8"	2.4	67	67	22	45	20	38

Tee

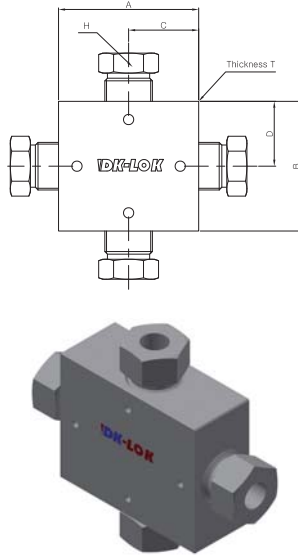
DK-T



Part No.	Pressure Rating	Tube Size	Orifice Size	Dimensions					
				A	B	C	D	H	T
DK11T-02	11,000psi	1/8"	1.4	38	25	19	19	12	15.5
DK11T-04	11,500psi	1/4"	4	50	35	25	25	16	20
DK07T-06	7,500psi	3/8"	5.5	50	35	25	25	17	20
DK05T-08	5,500psi	1/2"	8.5	63	45	31.5	31.5	25.4	25
DK20T-04	20,000psi	1/4"	2.8	44	25	22	17.5	12	16
DK20T-06		3/8"	5.2	50	35	25	25	16	20
DK20T-09		9/16"	9.1	63	45	31.5	31.5	22	25
DK20T-12		3/4"	1.3	76	57	38	38	27	35
DK20T-16		1"	17.5	105	76	52.5	52.5	36	45
DK30T-02	30,000psi	1/8"	1.16	28	38	19	19	13	20
DK30T-16		1"	11.1	105	76	52.5	52.5	36	45
DK60T-04	60,000psi	1/4"	2.4	50	35	25	22.5	16	25
DK60T-06		3/8"	3.2	50	40	25	27	20	25
DK60T-09		9/16"	4.8	67	54	33.25	35	30	38
DK100T-04	100,000psi	1/4"	2.4	44.5	63	31.5	31.5	16	25
DK150T-06	150,000psi	3/8"	2.4	67	90	45	45	20	38

Cross

DK-X

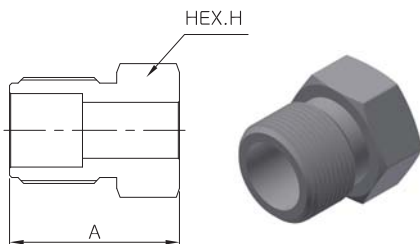


Part No.	Pressure Rating	Tube Size	Orifice Size	Dimensions					
				A	B	C	D	H	T
DK11X-02	11,000psi	1/8"	1.4	38	38	19	19	12	15.5
DK11X-04	11,500psi	1/4"	4	50	50	25	25	16	20
DK07X-06	7,500psi	3/8"	5.5	50	50	25	25	17	20
DK05X-08	5,500psi	1/2"	8.5	63	63	31.5	31.5	25.4	25
DK20X-04	20,000psi	1/4"	2.8	44	35	22	17.5	12	16
DK20X-06		3/8"	5.2	50	50	25	25	16	20
DK20X-09		9/16"	9.1	63	63	31.5	31.5	22	25
DK20X-12		3/4"	1.3	76	76	38	38	27	35
DK20X-16		1"	17.5	105	105	52.5	52.5	36	45
DK30X-02	30,000psi	1/8"	1.16	38	38	19	19	13	20
DK30X-16		1"	11.1	105	105	52.5	52.5	36	45
DK60X-04	60,000psi	1/4"	2.4	50	38	25	19	16	25
DK60X-06		3/8"	3.2	54	50	27	25	20	25
DK60X-09		9/16"	4.8	70	67	35	33.25	30	38
DK100X-04	100,000psi	1/4"	2.4	63	63	31.5	31.5	16	25
DK150X-06	150,000psi	3/8"	2.4	90	90	45	45	20	38

High Pressure Fitting Accessory

Gland

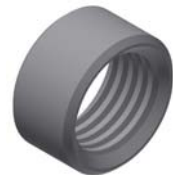
DK-G



Part No.				Pressure Rating	Tube Size	Dimensions	
Sleeve	Collar	Piug	Gland			HEX.H	A
DK11S-02			DK11G-02	11,000psi	1/8"	12	14.5
DK11S-04			DK11G-04	11,500psi	1/4"	16	16
DK07S-06			DK07G-06	7,500psi	3/8"	17	19
DK05S-02			DK05G-02	5,500psi	1/2"	25.4	24
	DK20C-04	DK20P-04	DK20G-04	20,000psi	1/4"	12	16
	DK20C-06	DK20P-06	DK20G-06		3/8"	16	16
	DK20C-09	DK20P-09	DK20G-09		9/16"	22	20
	DK30C-02	DK30P-02	DK30G-02	30,000psi	1/8"	27	28
	DK30C-04	DK30P-04	DK30G-04		1/4"	36	38
	DK30C-06	DK30P-06	DK30G-06		3/8"	13	18
	DK30C-09	DK30P-09	DK30G-09		9/16"	36	38
	DK60C-04	DK60P-04	DK60G-04	60,000psi	1/4"	16	20
	DK60C-06	DK60P-06	DK60G-06		3/8"	20	30
	DK60C-09	DK60P-09	DK60G-09		9/16"	30	38
	DK100C-04	DK100P-04	DK100G-04	100,000psi	1/4"	16	30
	DK150C-06	DK150P-06	DK150G-06	150,000psi	3/8"	20	30

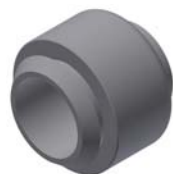
Collar

DK-C



Sleeve

DK-S



Tube DK-TL



Part No.	Pressure Rating	Tube Size	Dimensions		Thickness	Flow Area(mm ²)	Working pressure psi(bar)				
			Outside Diameter	Inside Diameter			-17.8~37.8°C 0~100°F	93°C 200°F	204°C 400°F	316°C 600°F	343°C 650°F
DK11TL-02	11,000 psi	1/8"	3.18	1.57	0.81	1.94	803.23	803.23	775.65	730.83	679.12
DK11TL-04	11,500 psi	1/4"	6.35	3.18	1.57	7.74	803.23	761.86	775.65	730.83	679.12
DK07TL-06	7,500 psi	3/8"	9.53	6.35	1.57	31.61	517.1	517.1	496.41	468.84	434.36
DK05TL-08	5,500 psi	1/2"	12.7	9.53	1.57	70.97	379.21	379.21	361.97	341.29	317.15
							-198~37.8°C -352~100°F	93°C 200°F	204°C 400°F	316°C 600°F	427°C 800°F
DK20TL-04	20,000 psi	1/4"	6.35	2.77	1.78	5.81	1378.93	1378.93	1378.93	1244.48	1158.3
DK20TL-06		3/8"	9.53	5.16	2.18	20.65	1378.93	1378.93	1378.93	1244.48	1158.3
DK20TL-09		9/16"	14.29	7.92	3.18	49.03	1378.93	1378.93	1378.93	1244.48	1158.3
DK20TL-12		3/4"	19.05	11.13	3.96	97.42	1378.93	1378.93	1378.93	1244.48	1158.3
DK20TL-16		1"	25.4	14.27	5.56	160	1378.93	1378.93	1378.93	1244.48	1158.3
DK30TL-02	30,000 psi	1/8"	3.18	1.02	1.08						
DK30TL-16		1"	25.4	11.1	7.15						
DK60TL-04	60,000 psi	1/4"	6.35	2.11	2.11	3.23	4136.79	4136.79	3981.66	3740.35	3495.59
DK60TL-06		3/8"	9.53	3.18	3.18	7.74	4136.79	4136.79	3981.66	3740.35	3495.59
DK60TL-09		9/16"	14.29	4.78	4.75	18.06	4136.79	4136.79	3981.66	3740.35	3495.59
DK100TL-04	100,000 psi	1/4"	6.35	1.59	2.38	3.23	6894.64	6894.64	6633.24	6230.55	5820.46
DK150TL-06	150,000 psi	3/8"	9.53	1.59	3.97	7.74	10341.97	10341.97	9955.87	9400.85	8738.97

Nipple DK-N

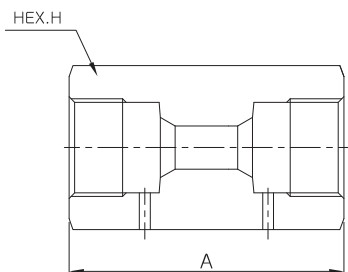


Part No.	Pressure Rating	Tube Size	Dimensions		Thickness	Flow Area(mm ²)	Working pressure psi(bar)				
			Outside Diameter	Inside Diameter			-198~37.8°C -352~100°F	93°C 200°F	204°C 400°F	316°C 600°F	427°C 800°F
DK20N-04	20,000 psi	1/4"	6.35	2.77	1.78	5.81	1378.93	1378.93	1378.93	1244.48	1158.3
DK20N-06		3/8"	9.53	5.16	2.18	20.65	1378.93	1378.93	1378.93	1244.48	1158.3
DK20N-09		9/16"	14.29	7.92	3.18	49.03	1378.93	1378.93	1378.93	1244.48	1158.3
DK20N-12		3/4"	19.05	11.13	3.96	97.42	1378.93	1378.93	1378.93	1244.48	1158.3
DK20N-16		1"	25.4	14.27	5.56	160	1378.93	1378.93	1378.93	1244.48	1158.3
DK30N-02	30,000 psi	1/8"	3.18	1.02	1.08						
DK30N-16		1"	25.4	11.1	7.15						
DK60N-04	60,000 psi	1/4"	6.35	2.11	2.11	3.23	4136.79	4136.79	3981.66	3740.35	3495.59
DK60N-06		3/8"	9.53	3.18	3.18	7.74	4136.79	4136.79	3981.66	3740.35	3495.59
DK60N-09		9/16"	14.29	4.78	4.75	18.06	4136.79	4136.79	3981.66	3740.35	3495.59
DK100N-04	100,000 psi	1/4"	6.35	1.59	2.38	3.23	6894.64	6894.64	6633.24	6230.55	5820.46
DK150N-06	150,000 psi	3/8"	9.53	1.59	3.97	7.74	10341.97	10341.97	9955.87	9400.85	8738.97

High Pressure Union & Adapter

Female Union

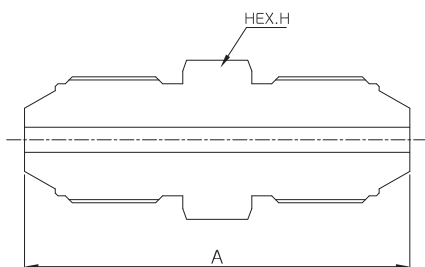
DK-FAU



Part No.	Pressure Rating	Tube Size	Dimensions	
			HEX.H	A
DK11FAU-02	11,000 psi	1/8"	12.7	31
DK11FAU-04	11,500 psi	1/4"	16	41.5
DK07FAU-06	7,500 psi	3/8"	19	44.5
DK05FAU-08	5,500 psi	1/2"	25.4	50.5
DK20FAU-04	20,000 psi	1/4"	16	41.5
DK20FAU-06		3/8"	19	44.5
DK20FAU-09		9/16"	25.4	54
DK20FAU-12		3/4"	36	63.5
DK20FAU-16		1"	46	89
DK30FAU-02	30,000 psi	1/8"	20	31
DK30FAU-16		1"	46	91
DK60FAU-04	60,000 psi	1/4"	20	35
DK60FAU-06		3/8"	25.4	44.5
DK60FAU-09		9/16"	36	57

Male Union

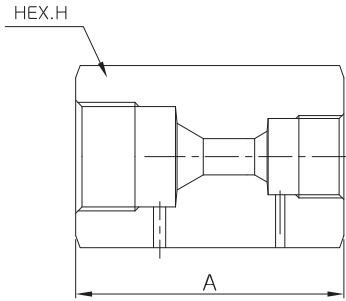
DK-MAU



Part No.	Pressure Rating	Tube Size	Dimensions	
			HEX.H	A
DK11MAU-02	11,000 psi	1/8"	12.7	35
DK11MAU-04	11,500 psi	1/4"	16	47
DK07MAU-06	7,500 psi	3/8"	19	54
DK05MAU-08	5,500 psi	1/2"	25.4	57.5
DK20MAU-04	20,000 psi	1/4"	12.7	44
DK20MAU-06		3/8"	16	54
DK20MAU-09		9/16"	25.4	64
DK20MAU-12		3/4"	30	82
DK20MAU-16		1"	36	107
DK30MAU-02	30,000 psi	1/8"	14	38
DK30MAU-16		1"	36	109
DK60MAU-04	60,000 psi	1/4"	16	43
DK60MAU-06		3/8"	20	58
DK60MAU-09		9/16"	30	68

Female Union Reducer

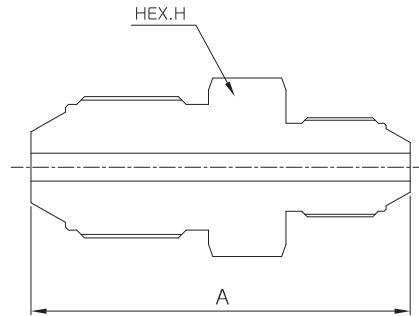
DK-FARU



Part No.	Female End																	
	11,500 psi			7,500 psi			5,500 psi			20,000 psi				30,000 psi		60,000 psi		
	1/4"	3/8"	1/2"	1/4"	3/8"	9/16"	3/4"	1"	1/8"	1"	1/4"	3/8"	9/16"					
11,500 psi	1/8"	DK11FARU 02-L04	DK11FARU 02-L06	DK11FARU 02-L08	DK11FARU 02-M04	DK11FARU 02-M06	DK11FARU 02-M09			DK11FARU 02-3H02		DK11FARU 02-6H04	DK11FARU 02-6H06	DK11FARU 02-6H09				
11,500 psi	1/4"		DK11FARU 04-L06	DK11FARU 04-L08	DK11FARU 04-M04	DK11FARU 04-M06	DK11FARU 04-M09	DK11FARU 04-M12		DK11FARU 04-3H02		DK11FARU 04-6H04	DK11FARU 04-6H06	DK11FARU 04-6H09				
7,500 psi	3/8"			DK07FARU 06-L08	DK07FARU 06-M04	DK07FARU 06-M06	DK07FARU 06-M09	DK07FARU 06-M12	DK07FARU 06-M16	DK07FARU 06-3H02	DK07FARU 06-3H16	DK07FARU 06-6H04	DK07FARU 06-6H06	DK07FARU 06-6H09				
5,500 psi	1/2"				DK07FARU 08-M04	DK07FARU 08-M06	DK07FARU 08-M09	DK07FARU 08-M12	DK07FARU 08-M16	DK07FARU 08-3H02	DK07FARU 08-3H16	DK07FARU 08-6H04	DK07FARU 08-6H06	DK07FARU 08-6H09				
20,000 psi	1/4"					DK20FARU 04-M06	DK20FARU 04-M09	DK20FARU 04-M12	DK20FARU 04-M16	DK20FARU 04-3H02		DK20FARU 04-6H04	DK20FARU 04-6H06	DK20FARU 04-6H09				
	3/8"						DK20FARU 06-M09	DK20FARU 06-M12	DK20FARU 06-M16	DK20FARU 06-3H02	DK20FARU 06-3H16	DK20FARU 06-6H04	DK20FARU 06-6H06	DK20FARU 06-6H09				
	9/16"							DK20FARU 09-M12	DK20FARU 09-M16	DK20FARU 09-3H02	DK20FARU 09-3H16	DK20FARU 09-6H04	DK20FARU 09-6H06	DK20FARU 09-6H09				
	3/4"								DK20FARU 12-M16	DK20FARU 12-3H02	DK20FARU 12-3H16	DK20FARU 12-6H04	DK20FARU 12-6H06	DK20FARU 12-6H09				
30,000 psi	1/8"											DK60FARU 02-6H04	DK60FARU 02-6H06	DK60FARU 02-6H09				
	1"											DK60FARU 16-6H04	DK60FARU 16-6H06	DK60FARU 16-6H09				
60,000 psi	1/4"												DK60FARU 04-6H06	DK60FARU 04-6H09				
	3/8"													DK60FARU 06-6H09				

Dimensions	Female End																									
	11,500 psi			7,500 psi			5,500 psi			20,000 psi				30,000 psi		60,000 psi										
	1/4"	3/8"	1/2"	1/4"	3/8"	9/16"	3/4"	1"	1/8"	1"	1/4"	3/8"	9/16"													
Female End	11,500 psi	1/8"	HEX.H A	HEX.H A	HEX.H A	HEX.H A	HEX.H A	HEX.H A	HEX.H A	HEX.H A	HEX.H A	HEX.H A	HEX.H A	HEX.H A	HEX.H A	HEX.H A	HEX.H A	HEX.H A	HEX.H A	HEX.H A	HEX.H A	HEX.H A	HEX.H A	HEX.H A		
	11,500 psi	1/4"																								
	7,500 psi	3/8"																								
	5,500 psi	1/2"																								
	20,000 psi	1/4"																								
		3/8"																								
		9/16"																								
		3/4"																								
	30,000 psi	1/8"																								
		1"																								
	60,000 psi	1/4"																								
		3/8"																								

Male Union Reducer DK-MAUR

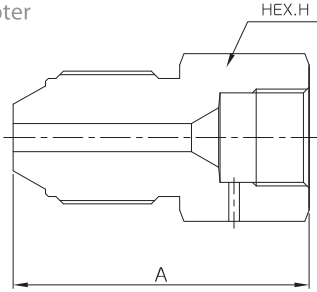


Part No.	Male End														
	11,500 psi		7,500 psi		5,500 psi		20,000 psi				30,000 psi		60,000 psi		
	1/4"	3/8"	1/2"	1/4"	3/8"	9/16"	3/4"	1"	1/8"	1"	1/4"	3/8"	9/16"		
11,500 psi 1/8"	DK11MAUR 02-L04	DK11MAUR 02-L06	DK11MAUR 02-L08	DK11MAUR 02-M04	DK11MAUR 02-M06	DK11MAUR 02-M09			DK11MAUR 02-3H02		DK11MAUR 02-6H04	DK11MAUR 02-6H06	DK11MAUR 02-6H09		
11,500 psi 1/4"		DK11MAUR 04-L06	DK11MAUR 04-L08	DK11MAUR 04-M04	DK11MAUR 04-M06	DK11MAUR 04-M09	DK11MAUR 04-M12		DK11MAUR 04-3H02		DK11MAUR 04-6H04	DK11MAUR 04-6H06	DK11MAUR 04-6H09		
7,500 psi 3/8"			DK07MAUR 06-L08	DK07MAUR 06-M04	DK07MAUR 06-M06	DK07MAUR 06-M09	DK07MAUR 06-M12	DK07MAUR 06-M16	DK07MAUR 06-3H02	DK07MAUR 06-3H16	DK07MAUR 06-6H04	DK07MAUR 06-6H06	DK07MAUR 06-6H09		
5,500 psi 1/2"				DK07FARU 08-M04	DK07MAUR 08-M06	DK07MAUR 08-M09	DK07MAUR 08-M12	DK07MAUR 08-M16	DK07MAUR 08-3H02	DK07MAUR 08-3H16	DK07MAUR 08-6H04	DK07MAUR 08-6H06	DK07MAUR 08-6H09		
20,000 psi	1/4"				DK20MAUR 04-M06	DK20MAUR 04-M09	DK20MAUR 04-M12	DK20MAUR 04-M16	DK20MAUR 04-3H02		DK20MAUR 04-6H04	DK20MAUR 04-6H06	DK20MAUR 04-6H09		
	3/8"					DK20MAUR 06-M09	DK20MAUR 06-M12	DK20MAUR 06-M16	DK20MAUR 06-3H02	DK20MAUR 06-3H16	DK20MAUR 06-6H04	DK20MAUR 06-6H06	DK20MAUR 06-6H09		
	9/16"						DK20MAUR 09-M12	DK20MAUR 09-M16	DK20MAUR 09-3H02	DK20MAUR 09-3H16	DK20MAUR 09-6H04	DK20MAUR 09-6H06	DK20MAUR 09-6H09		
	3/4"							DK20MAUR 12-M16	DK20MAUR 12-3H02	DK20MAUR 12-3H16	DK20MAUR 12-6H04	DK20MAUR 12-6H06	DK20MAUR 12-6H09		
30,000 psi	1/8"										DK60MAUR 02-6H04	DK60MAUR 02-6H06	DK60MAUR 02-6H09		
	1"										DK60MAUR 16-6H04	DK60MAUR 16-6H06	DK60MAUR 16-6H09		
60,000 psi	1/4"											DK60MAUR 04-6H06	DK60MAUR 04-6H09		
	3/8"												DK60MAUR 06-6H09		

Dimensions	Male End																										
	11,500 psi		7,500 psi		5,500 psi		20,000 psi				30,000 psi		60,000 psi														
	1/4"	3/8"	1/2"	1/4"	3/8"	9/16"	3/4"	1"	1/8"	1"	1/4"	3/8"	9/16"														
	HEX.H	A	HEX.H	A	HEX.H	A	HEX.H	A	HEX.H	A	HEX.H	A	HEX.H	A	HEX.H	A	HEX.H	A	HEX.H	A	HEX.H	A					
11,500 psi 1/8"	16	41	19	46.5	25.4	49.5	14	39.5	16	43.5	25.4	49.5					14	36.5			16	41	25.4	50	30	54.5	
11,500 psi 1/4"			19	51.5	25.4	54.5	16	44.5	16	48.5	25.4	56.5	30	65			14	41.5			16	46	25.4	55	30	59.5	
7,500 psi 3/8"					25.4	57	19	47	19	51	25.4	59	30	67.5	36	77.5	19	44	36	78.5	19	48.5	25.4	57.5	30	62	
5,500 psi 1/2"							25.4	54	25.4	58	25.4	62	30	70	36	80	25.4	51	36	81	25.4	51.5	25.4	60	30	64.5	
20,000 psi	1/4"								16	48	25.4	56	30	64.5	36	78.5	14	41			16	45.5	20	54.5	30	61	
	3/8"										25.4	60	30	70	36	84.5	16	45	36	85.5	16	49.5	20	58.5	30	65	
	9/16"												30	70	36	91	25.4	53	36	92	22	56	22	62.5	30	69	
	3/4"														36	97	30	65	36	98	30	62	30	70.5	30	75	
30,000 psi	1/8"																				16	42.5	20	51.5	30	58	
	1"																				36	81.5	36	87.5	36	91	
60,000 psi	1/4"																							20	52	30	58.5
	3/8"																									30	64.5

Male Adapter * Female Adapter

DK-MAFA

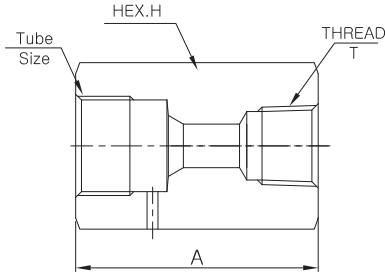


Part No.	Female End																
	11,000 psi				11,500 psi				20,000 psi				30,000 psi		60,000 psi		
	1/8"	1/4"	3/8"	1/2"	1/4"	3/8"	9/16"	3/4"	1"	1/8"	1"	1/4"	3/8"	9/16"			
11,000 psi	1/8"		DK11MAFA 02-L04	DK11MAFA 02-L06	DK11MAFA 02-L08	DK11MAFA 02-M04	DK11MAFA 02-M06	DK11MAFA 02-M09			DK11MAFA 02-3H02		DK11MAFA 02-6H04	DK11MAFA 02-6H06	DK11MAFA 02-6H09		
11,500 psi	1/4"	DK11MAFA 04-L02		DK11MAFA 04-L06	DK11MAFA 04-L08	DK11MAFA 04-M04	DK11MAFA 04-M06	DK11MAFA 04-M09	DK11MAFA 04-M12		DK11MAFA 04-3H02		DK11MAFA 04-6H04	DK11MAFA 04-6H06	DK11MAFA 04-6H09		
7,500 psi	3/8"	DK07MAFA 06-L02	DK07MAFA 06-L04		DK07MAFA 06-L08	DK07MAFA 06-M04	DK07MAFA 06-M06	DK07MAFA 06-M09	DK07MAFA 06-M12	DK07MAFA 06-M16	DK07MAFA 06-3H02	DK07MAFA 06-3H16	DK07MAFA 06-6H04	DK07MAFA 06-6H06	DK07MAFA 06-6H09		
5,500 psi	1/2"	DK07MAFA 08-L02	DK07MAFA 08-L04	DK07MAFA 08-L06		DK07MAFA 08-M04	DK07MAFA 08-M06	DK07MAFA 08-M09	DK07MAFA 08-M12	DK07MAFA 08-M16	DK07MAFA 08-3H02	DK07MAFA 08-3H16	DK07MAFA 08-6H04	DK07MAFA 08-6H06	DK07MAFA 08-6H09		
20,000 psi	1/4"	DK20MAFA 04-L02	DK20MAFA 04-L04	DK20MAFA 04-L06	DK20MAFA 04-L08		DK20MAFA 04-M06	DK20MAFA 04-M09	DK20MAFA 04-M12	DK20MAFA 04-M16	DK20MAFA 04-3H02	DK20MAFA 04-3H16	DK20MAFA 04-6H04	DK20MAFA 04-6H06	DK20MAFA 04-6H09		
	3/8"	DK20MAFA 06-L02	DK20MAFA 06-L04	DK20MAFA 06-L06	DK20MAFA 06-L08	DK20MAFA 06-M04		DK20MAFA 06-M09	DK20MAFA 06-M12	DK20MAFA 06-M16	DK20MAFA 06-3H02	DK20MAFA 06-3H16	DK20MAFA 06-6H04	DK20MAFA 06-6H06	DK20MAFA 06-6H09		
	9/16"	DK20MAFA 09-L02	DK20MAFA 09-L04	DK20MAFA 09-L06	DK20MAFA 09-L08	DK20MAFA 09-M04	DK20MAFA 09-M06		DK20MAFA 09-M12	DK20MAFA 09-M16	DK20MAFA 09-3H02	DK20MAFA 09-3H16	DK20MAFA 09-6H04	DK20MAFA 09-6H06	DK20MAFA 09-6H09		
	3/4"		DK20MAFA 12-L04	DK20MAFA 12-L06	DK20MAFA 12-L08	DK20MAFA 12-M04	DK20MAFA 12-M06	DK20MAFA 12-M09		DK20MAFA 12-M16		DK20MAFA 12-3H16	DK20MAFA 12-6H04	DK20MAFA 12-6H06	DK20MAFA 12-6H09		
	1"		DK20MAFA 16-L04	DK20MAFA 16-L06	DK20MAFA 16-L08	DK20MAFA 16-M04	DK20MAFA 16-M06	DK20MAFA 16-M09	DK20MAFA 16-M12			DK20MAFA 16-3H16	DK20MAFA 16-6H04	DK20MAFA 16-6H06	DK20MAFA 16-6H09		
30,000 psi	1/8"	DK60MAFA 02-L02	DK60MAFA 02-L04	DK60MAFA 02-L06	DK60MAFA 02-L08	DK60MAFA 02-M04	DK60MAFA 02-M06	DK60MAFA 02-M09					DK60MAFA 02-6H04	DK60MAFA 02-6H06	DK60MAFA 02-6H09		
	1"		DK60MAFA 16-L04	DK60MAFA 16-L06	DK60MAFA 16-L08	DK60MAFA 16-M04	DK60MAFA 16-M06	DK60MAFA 16-M09	DK60MAFA 16-M12	DK60MAFA 16-M16	DK60MAFA 16-3H02		DK60MAFA 16-6H04	DK60MAFA 16-6H06	DK60MAFA 16-6H09		
60,000 psi	1/4"	DK60MAFA 04-L02	DK60MAFA 04-L04	DK60MAFA 04-L06	DK60MAFA 04-L08	DK60MAFA 04-M04	DK60MAFA 04-M06	DK60MAFA 04-M09	DK60MAFA 04-M12		DK60MAFA 04-3H02	DK60MAFA 04-3H16		DK60MAFA 04-6H06	DK60MAFA 04-6H09		
	3/8"	DK60MAFA 06-L02	DK60MAFA 06-L04	DK60MAFA 06-L06	DK60MAFA 06-L08	DK60MAFA 06-M04	DK60MAFA 06-M06	DK60MAFA 06-M09	DK60MAFA 06-M12	DK60MAFA 06-M16	DK60MAFA 06-3H02	DK60MAFA 06-3H16	DK60MAFA 06-6H04		DK60MAFA 06-6H09		
	9/16"	DK60MAFA 09-L02	DK60MAFA 09-L04	DK60MAFA 09-L06	DK60MAFA 09-L08	DK60MAFA 09-M04	DK60MAFA 09-M06	DK60MAFA 09-M09	DK60MAFA 09-M12	DK60MAFA 09-M16	DK60MAFA 09-3H02	DK60MAFA 09-3H16	DK60MAFA 09-6H04	DK60MAFA 09-6H06			

Dimensions	Female End																												
	11,500 psi		11,500 psi		7,500 psi		5,500 psi		20,000 psi					30,000 psi		60,000 psi													
	1/8"	1/4"	3/8"	1/2"	1/4"	3/8"	9/16"	3/4"	1"	1/8"	1"	1/4"	3/8"	9/16"															
	HEX.H	A	HEX.H	A	HEX.H	A	HEX.H	A	HEX.H	A	HEX.H	A	HEX.H	A	HEX.H	A	HEX.H	A	HEX.H	A	HEX.H	A							
11,500 psi	1/8"			16	32	19	35	25.4	38	16	32	19	35	25.4	42					20	27			19	29	25.4	34	36	40
11,500 psi	1/4"	16	27.5			19	41.5	25.4	44.5	16	35	19	42.5	25.4	48	36	57.5			20	35			19	32.5	25.4	39.5	36	45.5
7,500 psi	3/8"	19	30	19	35			25.4	45	19	35	19	40	25.4	48	36	57.5	46	70	20	35	46	70	19	35	25.4	42	36	45.5
5,500 psi	1/2"	25.4	33	25.4	33	25.4	37			25.4	37	25.4	40	25.4	48	36	57.5	46	70	25.4	37	46	70	25.4	35	25.4	42	36	45.5
20,000 psi	1/4"	16	34	16	40	19	40	25.4	43			19	40	25.4	50	36	57.5	46	70	20	37	46	70	19	32	25.4	42	36	45.50
	3/8"	16	34	16	40	19	44	25.4	48	16	36			25.4	52	36	57.5	46	72	20	37	46	72	19	36.5	25.4	42	36	47
	9/16"	22	40	22	44	22	45	25.4	49	24	40	24	46			36	62.5	46	75	22	40	46	75	22	40	25.4	47	36	52
	3/4"			30	46	30	50	30	56	30	48	30	52	30	57			46	80			46	80	30	48	30	52	36	58
30,000 psi	1/8"	16	29	16	34	19	37	25.4	40	16	31	19	37	25.4	44									19	30	25.4	36	36	46
	1"			36	55	36	55	36	55	36	57	36	60	36	64	36	70	46	82					36	55	36	61	36	65
60,000 psi	1/4"	16	30	16	35	19	38	25.4	42	16	32	19	40	25.4	46	36	55			20	32					25.4	44.5	36	49.5
	3/8"	20	35.5	20	41.5	20	42.5	25.4	44.5	20	42.5	20	43.5	25.4	50.5	36	57.5	46	74.5	20	35.5	46	74.5	20	38.5			36	44.5
	9/16"	30	38	30	42.5	30	42.5	30	44.5	30	42.5	30	46	30	51	36	61	46	78	30	38	46	78	30	36.5	30	39		

Female Adapter * Female Thread

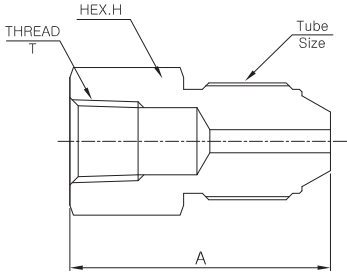
DK-FAF



Connection Type	Part No.	Pressure Rating	Tube Size	Thread T F.NPT	Dimensions		
					HEX.H	A	
Low Pressure 11,500 psi	DK11FAF02-2N	11,000 psi	1/8"	1/8"	16	35	
	DK11FAF02-4N			1/4"	19	38	
	DK11FAF02-6N			3/8"	25.4	41	
	DK11FAF02-8N			1/2"	30	50.5	
	DK11FAF04-2N	11,500 psi	1/4"	1/8"	16	38	
	DK11FAF04-4N			1/4"	19	41.5	
	DK11FAF04-6N			3/8"	25.4	44.5	
	DK11FAF04-8N			1/2"	30	54	
	DK11FAF04-12N	7,500 psi	3/8"	3/4"	36	55.5	
	DK07FAF06-2N			1/8"	19	41.5	
	DK07FAF06-4N			1/4"	19	44.5	
	DK07FAF06-6N			3/8"	25.4	48	
	DK07FAF06-7N	5,500 psi	1/2"	1/2"	30	54	
	DK07FAF06-12N			3/4"	36	58.5	
	DK07FAF06-16N			1"	46	68	
	DK05FAF08-2N			1/8"	25.4	38	
	DK05FAF08-4N	15,000 psi	1/4"	1/4"	25.4	50.5	
	DK05FAF08-6N			3/8"	25.4	50.5	
DK05FAF08-8N	1/2"			30	57		
DK05FAF08-12N	3/4"			36	63.5		
DK05FAF08-16N	10,000 psi	3/8"	1"	46	72		
DK20FAF04-2N			1/8"	16	35		
DK20FAF04-4N			1/4"	19	41.5		
DK20FAF04-6N			3/8"	25.4	41.5		
DK20FAF04-8N	10,000 psi	1/4"	1/2"	30	50.5		
DK20FAF04-12N			3/4"	36	57		
DK20FAF06-2N			1/8"	19	38		
DK20FAF06-4N			1/4"	19	44.5		
DK20FAF06-6N	15,000 psi	3/8"	3/8"	25.4	46		
DK20FAF06-8N			1/2"	30	54		
DK20FAF06-12N			3/4"	36	57		
DK20FAF06-16N			1"	46	66.5		
DK20FAF09-2N	10,000 psi	9/16"	1/8"	25.4	41.5		
DK20FAF09-4N			1/4"	25.4	50.5		
DK20FAF09-6N			3/8"	25.4	50.5		
DK20FAF09-8N			1/2"	30	57		
DK20FAF09-12N	15,000 psi	9/16"	3/4"	36	57		
DK20FAF09-16N			1"	46	66.5		
DK20FAF12-4N			1/4"	36	54.5		
DK20FAF12-6N			3/8"	36	60		
DK20FAF12-8N	15,000 psi	3/4"	1/2"	36	66.5		
DK20FAF12-12N			3/4"	36	66.5		
DK20FAF12-16N			1"	46	73		
DK20FAF16-4N			10,000 psi	1"	1/4"	46	67
DK20FAF16-6N	3/8"	46			67		
DK20FAF16-8N	1/2"	46			73		
DK20FAF16-12N	3/4"	46			76		
DK20FAF16-16N	30,000 psi	1/8"	1"	46	83		
DK30FAF02-2N			1/8"	20	31		
DK30FAF02-4N			1/4"	20	36		
DK30FAF02-6N			3/8"	25.4	41		
DK30FAF02-8N	15,000 psi	1"	1/2"	30	45.5		
DK30FAF16-4N			1/4"	46	71		
DK30FAF16-6N			3/8"	46	71		
DK30FAF16-8N			1/2"	46	76		
DK30FAF16-12N	10,000 psi	1"	3/4"	46	80		
DK30FAF16-16N			1"	46	87		
DK60FAF04-2N			15,000 psi	1/4"	1/8"	19	35
DK60FAF04-4N					1/4"	19	41.5
DK60FAF04-6N	3/8"	25.4			41.5		
DK60FAF04-8N	1/2"	30			50.5		
DK60FAF04-12N	60,000 psi	3/8"	3/4"	36	55.5		
DK60FAF06-2N			1/8"	25.4	41.5		
DK60FAF06-4N			1/4"	25.4	47.5		
DK60FAF06-6N			3/8"	25.4	47.5		
DK60FAF06-8N	15,000 psi	3/8"	1/2"	30	54		
DK60FAF06-12N			3/4"	36	58.5		
DK60FAF06-16N			1"	46	65.5		
DK60FAF09-2N			10,000 psi	9/16"	1/8"	36	46
DK60FAF09-4N	1/4"	36			50.5		
DK60FAF09-6N	3/8"	36			50.5		
DK60FAF09-8N	1/2"	36			56.5		
DK60FAF09-12N	15,000 psi	9/16"	3/4"	36	60		
DK60FAF09-16N			1"	46	68		

Male Adapter * Female Thread

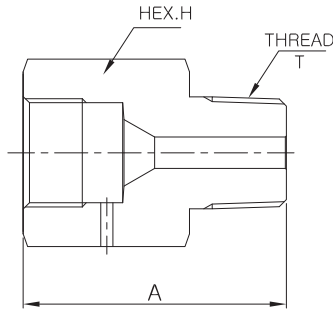
DK-MAF



Connection Type	Part No.	Pressure Rating	Tube Size	Thread T F.NPT	Dimensions		
					HEX.H	A	
Low Pressure 11,500 psi	DK11MAF02-2N	11,000 psi	1/8"	1/8"	16	28	
	DK11MAF02-4N			1/4"	19	34	
	DK11MAF02-6N			3/8"	25.4	38	
	DK11MAF02-8N			1/2"	30	43	
	DK11MAF04-2N	11,500 psi	1/4"	1/8"	16	33	
	DK11MAF04-4N			1/4"	19	37	
	DK11MAF04-6N			3/8"	25.4	43	
	DK11MAF04-8N			1/2"	30	47.5	
	DK11MAF04-12N	7,500 psi	3/8"	3/4"	36	55.5	
	DK07MAF06-2N			1/8"	19	35	
	DK07MAF06-4N			1/4"	19	37	
	DK07MAF06-6N			3/8"	25.4	43	
	DK07MAF06-7N	5,500 psi	1/2"	1/2"	30	50	
	DK07MAF06-12N			3/4"	36	57.5	
	DK07MAF06-16N			1"	46	70	
	DK05MAF08-2N			1/8"	19	35	
	DK05MAF08-4N	15,000 psi	1/4"	1/4"	19	37	
	DK05MAF08-6N			3/8"	25.4	43	
	DK05MAF08-8N			1/2"	30	50	
	DK05MAF08-12N			3/4"	36	57.5	
DK05MAF08-16N	10,000 psi	3/8"	1"	46	70		
DK20MAF04-2N			1/8"	16	33		
DK20MAF04-4N			1/4"	19	37		
DK20MAF04-6N			3/8"	25.4	43		
DK20MAF04-8N	15,000 psi	1/2"	1/2"	30	50		
DK20MAF04-12N			3/4"	36	57.5		
DK20MAF06-2N			1/8"	16	34		
DK20MAF06-4N			1/4"	19	39.5		
DK20MAF06-6N	10,000 psi	3/8"	3/8"	25.4	45		
DK20MAF06-8N			1/2"	30	50		
DK20MAF06-12N			3/4"	36	57.5		
DK20MAF06-16N			1"	46	70		
DK20MAF09-2N	15,000 psi	9/16"	1/8"	22	40		
DK20MAF09-4N			1/4"	22	43		
DK20MAF09-6N			3/8"	25.4	47		
DK20MAF09-8N			1/2"	30	54		
DK20MAF09-12N	10,000 psi	3/4"	3/4"	36	62		
DK20MAF09-16N			1"	46	73		
DK20MAF12-4N			1/4"	30	48		
DK20MAF12-6N			3/8"	30	52		
DK20MAF12-8N	15,000 psi	1/2"	1/2"	30	56		
DK20MAF12-12N			3/4"	36	68		
DK20MAF12-16N			1"	46	78		
DK20MAF16-4N			10,000 psi	1"	1/4"	36	60
DK20MAF16-6N	3/8"	36			60		
DK20MAF16-8N	1/2"	36			60		
DK20MAF16-12N	3/4"	36			68		
DK20MAF16-16N	30,000 psi	1"	1"	46	78		
DK30MAF02-2N			1/8"	16	29		
DK30MAF02-4N			1/4"	19	36		
DK30MAF02-6N			3/8"	25.4	39		
DK30MAF02-8N	15,000 psi	1"	1/2"	30	43		
DK30MAF16-4N			1/4"	36	61		
DK30MAF16-6N			3/8"	36	61		
DK30MAF16-8N			1/2"	36	61		
DK30MAF16-12N	10,000 psi	3/4"	3/4"	36	69		
DK30MAF16-16N			1"	46	79		
DK60MAF04-2N			15,000 psi	1/4"	1/8"	16	30
DK60MAF04-4N					1/4"	19	36
DK60MAF04-6N	3/8"	25.4			42		
DK60MAF04-8N	1/2"	30			46		
DK60MAF04-12N	10,000 psi	3/8"	3/4"	36	53		
DK60MAF06-2N			1/8"	20	35.5		
DK60MAF06-4N			1/4"	20	40.5		
DK60MAF06-6N			3/8"	25.4	45.5		
DK60MAF06-8N	15,000 psi	1/2"	1/2"	30	52.5		
DK60MAF06-12N			3/4"	36	58.5		
DK60MAF06-16N			1"	46	65.5		
DK60MAF09-2N			10,000 psi	9/16"	1/8"	30	38
DK60MAF09-4N	1/4"	30			41		
DK60MAF09-6N	3/8"	30			49		
DK60MAF09-8N	1/2"	30			54		
DK60MAF09-12N	15,000 psi	3/4"	3/4"	36	59		
DK60MAF09-16N			1"	46	70		

Female Adapter * Male Thread

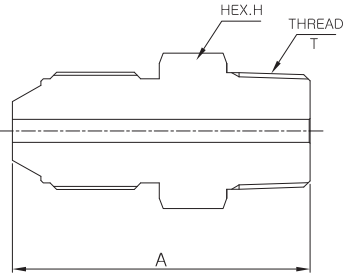
DK-FAM



Connection Type	Part No.	Pressure Rating	Tube Size	Thread T F.NPT	Dimensions	
					HEX.H	A
Low Pressure 11,500 psi	DK11FAM02-2N	11,000 psi	1/8"	1/8"	12.7	25
	DK11FAM02-4N			1/4"	16	28
	DK11FAM02-6N			3/8"	19	30
	DK11FAM02-8N			1/2"	25.4	37
	DK11FAM04-2N			1/8"	16	31
	DK11FAM04-4N	11,500 psi	1/4"	1/4"	16	35
	DK11FAM04-6N			3/8"	19	35
	DK11FAM04-8N			1/2"	25.4	41
	DK11FAM04-12N			3/4"	30	44.5
	DK07FAM06-2N			1/8"	19	36
	DK07FAM06-4N	7,500 psi	3/8"	1/4"	19	38
	DK07FAM06-6N			3/8"	19	38
	DK07FAM06-7N			1/2"	25.4	43
	DK07FAM06-12N			3/4"	30	44.5
	DK07FAM06-16N			1"	36	45
	DK05FAM08-2N	5,500 psi	1/2"	1/8"	25.4	38
	DK05FAM08-4N			1/4"	25.4	41
	DK05FAM08-6N			3/8"	25.4	42
	DK05FAM08-8N			1/2"	25.4	47
	DK05FAM08-12N			3/4"	30	46.5
DK05FAM08-16N	1"	36	45			
Medium Pressure 20,000 psi	DK20FAM04-2N	15,000 psi	1/4"	1/8"	16	28
	DK20FAM04-4N			1/4"	16	33
	DK20FAM04-6N			3/8"	19	35
	DK20FAM04-8N			1/2"	25.4	37
	DK20FAM04-12N			3/4"	30	44.5
	DK20FAM06-2N	15,000 psi	3/8"	1/8"	19	36
	DK20FAM06-4N			1/4"	19	36
	DK20FAM06-6N			3/8"	19	38
	DK20FAM06-8N			1/2"	25.4	43
	DK20FAM06-12N			3/4"	30	44.5
	DK20FAM06-16N	10,000 psi	1"	36	50	
	DK20FAM09-2N	15,000 psi	9/16"	1/8"	25.4	42
	DK20FAM09-4N			1/4"	25.4	44
	DK20FAM09-6N			3/8"	25.4	42
	DK20FAM09-8N			1/2"	25.4	47
	DK20FAM09-12N			3/4"	30	50.5
	DK20FAM09-16N	10,000 psi	1"	36	55	
	DK20FAM12-4N	15,000 psi	3/4"	1/4"	36	52
	DK20FAM12-6N			3/8"	36	52
	DK20FAM12-8N			1/2"	36	52
DK20FAM12-12N	3/4"			36	57	
DK20FAM12-16N	10,000 psi			1"	36	57
DK20FAM16-4N	15,000 psi	1"	1/4"	46	68	
DK20FAM16-6N			3/8"	46	68	
DK20FAM16-8N			1/2"	46	68	
DK20FAM16-12N			3/4"	46	68	
DK20FAM16-16N			10,000 psi	1"	46	70
High Pressure	DK30FAM02-2N	15,000 psi	1/8"	1/8"	20	25
	DK30FAM02-4N			1/4"	20	30
	DK30FAM02-6N			3/8"	20	30
	DK30FAM02-8N			1/2"	25.4	37
	DK30FAM02-12N			3/4"	30	44.5
	DK30FAM16-4N	15,000 psi	1"	1/4"	46	68
	DK30FAM16-6N			3/8"	46	68
	DK30FAM16-8N			1/2"	46	68
	DK30FAM16-12N			3/4"	46	68
	DK30FAM16-16N			10,000 psi	1"	46
	DK60FAM04-2N	15,000 psi	1/4"	1/8"	19	28
	DK60FAM04-4N			1/4"	19	33
	DK60FAM04-6N			3/8"	19	33
	DK60FAM04-8N			1/2"	25.4	37
	DK60FAM04-12N			10,000 psi	3/4"	30
	DK60FAM06-2N	15,000 psi	3/8"	1/8"	25.4	36
	DK60FAM06-4N			1/4"	25.4	38
	DK60FAM06-6N			3/8"	25.4	38
	DK60FAM06-8N			1/2"	25.4	43
	DK60FAM06-12N			10,000 psi	3/4"	30
DK60FAM06-16N	1"	36	50			
DK60FAM09-2N	15,000 psi	9/16"	1/8"	36	41	
DK60FAM09-4N			1/4"	36	43	
DK60FAM09-6N			3/8"	36	44	
DK60FAM09-8N			1/2"	36	47	
DK60FAM09-12N			10,000 psi	3/4"	36	54
DK60FAM09-16N	1"	36	57			

Male Adapter * Male Thread

DK-MAM



Connection Type	Part No.	Pressure Rating	Tube Size	Thread T F.NPT	Dimensions		
					HEX.H	A	
Low Pressure 11,500 psi	DK11MAM02-2N	11,000 psi	1/8"	1/8"	12.7	34.5	
	DK11MAM02-4N			1/4"	16	41.5	
	DK11MAM02-6N			3/8"	19	44.5	
	DK11MAM02-8N			1/2"	25.4	49.5	
	DK11MAM04-2N	11,500 psi	1/4"	1/8"	16	39.5	
	DK11MAM04-4N			1/4"	16	44.5	
	DK11MAM04-6N			3/8"	19	47.5	
	DK11MAM04-8N			1/2"	25.4	54.5	
	DK11MAM04-12N	7,500 psi	3/8"	3/4"	30	57.5	
	DK07MAM06-2N			1/8"	19	42	
	DK07MAM06-4N			1/4"	19	47	
	DK07MAM06-6N			3/8"	19	50	
	DK07MAM06-7N	5,500 psi	1/2"	1/2"	25.4	57	
	DK07MAM06-12N			3/4"	30	60	
	DK07MAM06-16N			1"	36	60	
	DK05MAM08-2N			1/8"	25.4	44.5	
	DK05MAM08-4N	15,000 psi	1/4"	1/4"	25.4	47.5	
	DK05MAM08-6N			3/8"	25.4	50.5	
DK05MAM08-8N	1/2"			25.4	57.5		
DK05MAM08-12N	3/4"			30	60.5		
DK05MAM08-16N	10,000 psi	3/8"	1"	36	66.5		
DK20MAM04-2N			1/8"	12.7	41		
DK20MAM04-4N			1/4"	16	44		
DK20MAM04-6N			3/8"	19	46		
DK20MAM04-8N	15,000 psi	1/4"	1/2"	25.4	54		
DK20MAM04-12N			3/4"	30	59		
DK20MAM06-2N			1/8"	16	45		
DK20MAM06-4N			1/4"	16	49		
DK20MAM06-6N	10,000 psi	3/8"	3/8"	19	50		
DK20MAM06-8N			1/2"	25.4	58		
DK20MAM06-12N			3/4"	30	63		
DK20MAM06-16N			1"	36	69		
DK20MAM09-2N	15,000 psi	9/16"	1/8"	22	50.5		
DK20MAM09-4N			1/4"	22	55		
DK20MAM09-6N			3/8"	22	54		
DK20MAM09-8N			1/2"	25.4	62		
DK20MAM09-12N	10,000 psi	3/4"	3/4"	30	67		
DK20MAM09-16N			1"	36	73		
DK20MAM12-4N			1/4"	30	63		
DK20MAM12-6N			3/8"	30	64		
DK20MAM12-8N	15,000 psi	3/4"	1/2"	30	68		
DK20MAM12-12N			3/4"	30	73		
DK20MAM12-16N			1"	36	79		
DK20MAM16-4N			10,000 psi	1"	1/4"	36	80
DK20MAM16-6N	3/8"	36			81		
DK20MAM16-8N	1/2"	36			84		
DK20MAM16-12N	3/4"	36			85		
DK20MAM16-16N	30,000 psi	1"	1"	36	89		
DK30MAM02-2N			1/8"	14	36		
DK30MAM02-4N			1/4"	14	41		
DK30MAM02-6N			3/8"	19	46		
DK30MAM02-8N	15,000 psi	1"	1/2"	25.4	51		
DK30MAM16-4N			1/4"	36	79		
DK30MAM16-6N			3/8"	36	80		
DK30MAM16-8N			1/2"	36	83		
DK30MAM16-12N	10,000 psi	3/8"	3/4"	36	84		
DK30MAM16-16N			1"	36	88		
DK60MAM04-2N			15,000 psi	1/4"	1/8"	16	41.5
DK60MAM04-4N					1/4"	16	44.5
DK60MAM04-6N	3/8"	19			46.5		
DK60MAM04-8N	1/2"	25.4			51.5		
DK60MAM04-12N	10,000 psi	3/8"	3/4"	30	56.5		
DK60MAM06-2N			1/8"	20	47.5		
DK60MAM06-4N			1/4"	20	50.5		
DK60MAM06-6N			3/8"	20	52.5		
DK60MAM06-8N	15,000 psi	3/8"	1/2"	25.4	57.5		
DK60MAM06-12N			3/4"	30	62.5		
DK60MAM06-16N			1"	36	68.5		
DK60MAM09-2N			10,000 psi	9/16"	1/8"	30	53
DK60MAM09-4N	1/4"	30			56		
DK60MAM09-6N	3/8"	30			57		
DK60MAM09-8N	1/2"	30			61		
DK60MAM09-12N	15,000 psi	3/4"	3/4"	30	66		
DK60MAM09-16N			1"	36	72		

High Pressure Tooling

The Coning and Threading tools are designed for simple accurate preparation of tubing ends for the 20,000 psig, 60,000 psig and ultra high pressure connection. The spare parts are interchangeable and easy to install and work for the coned tubing ends. (They are not required to reseating job)

Coning Tool

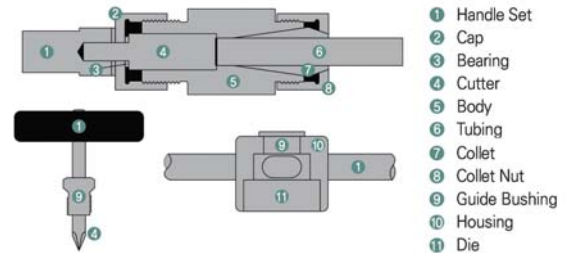
The Coning tool is designed for preparing to cone on the tubing ends for the 20,000 psig, 60,000psig and ultra high pressure connections. The cone degrees are approximately 57 to 59°. The cutter and collets are interchangeable each other. (except 9/16" sizes)

Threading Tool

The Threading tool is designed for preparing a thread which is left hand type for the 20,000 psig, 60,000psig and ultra high pressure connections. The threaded die and guide bushings are interchangeable for all. (except 1/8" sizes)

Reseating Tool

The reseating tool is designed for repairing old or damaged tubing connection seats for valves and fittings. This does not require to have coning and threading tools.



- 1 Handle Set
- 2 Cap
- 3 Bearing
- 4 Cutter
- 5 Body
- 6 Tubing
- 7 Collet
- 8 Collet Nut
- 9 Guide Bushing
- 10 Housing
- 11 Die

Pressure Rating	Tube Size	Part No.						
		Coning Tool			Threading Tool			Reseating Tool
		Set	Spare Cutter	Spare Collet	Set	Die	Guide Bushing	
20,000 psi	1/4"	DK20-CT-4	DK20-CT-4U	DK60-CT-4O	DK20-TT-4	DK20-TT-4D	DK20-TT-4B	DK20-RT-4
	3/8"	DK20-CT-6	DK20-CT-6U	DK60-CT-6O	DK20-TT-6	DK20-TT-6D	DK20-TT-6B	DK20-RT-6
	9/16"	DK20-CT-9	DK20-CT-9U	DK60-CT-9O	DK20-TT-9	DK20-TT-9D	DK20-TT-9B	DK20-RT-9
60,000 psi	1/4"	DK60-CT-4	DK60-CT-4U	DK60-CT-4O	DK60-TT-4	DK60-TT-4D	DK60-TT-4B	DK60-RT-4
	3/8"	DK60-CT-6	DK60-CT-6U	DK60-CT-6O	DK60-TT-6	DK60-TT-6D	DK60-TT-6B	DK60-RT-6
	9/16"	DK60-CT-9	DK60-CT-9U	DK60-CT-9O	DK60-TT-9	DK60-TT-9D	DK60-TT-9B	DK60-RT-9

How to order

DK	-60	-NV	-04	-O-R-GF-SG	-S
	Pressure	Type of Components	End Connections	Options	Material
	05 : 5,500 psi	NV : Needle Valve	Tube Size	Needle Valve	S : Stainless steel 316
	07 : 7,500 psi	CV : Check Valve	02 : 1/8"	A : Angle type	H : Hastelloy
	11 : 11,000 psi	L : Fitting Elbow	04 : 1/4"	O : 3way/1on pressure type	HC : Hastelloy C276 wetted part
	20 : 20,000 psi	T : Fitting Tee	06 : 3/8"	T : 3way/2on pressure type	IN : Inconel 600
	60 : 60,000 psi	X : Fitting Cross	09 : 9/16"	R : Regulating Stem	L625 : Inconel 625
	100 : 100,000 psi	S : Fitting Accessory Sleeve	12 : 3/4"	GF : Packing Optional Graphite	L825 : Inconel 825
	150 : 150,000 psi	G : Fitting Accessory Gland	16 : 1"		NI : Nickel 200
		C : Fitting Accessory Collar		Check Valve	TI : Titanium
		TL : Tube	Pipe Thread	O : O-Ring type	
		N : Nipple	N : NPT Thread		
		FAU : Female Union	R : PT Thread	SG : Sour Gas	
		FARU : Male Union Reducer	2 : 1/8"		
		MAU : Male Union	4 : 1/4"		
		MAUR : Male Union Reducer	6 : 3/8"		
		MAFA : Male Adapter * Female Adapter	8 : 1/2"		
		FAF : Female Adapter * Female Thread	12 : 3/4"		
		MAF : Male Adapter * Female Thread	16 : 1"		
		FAM : Female Adapter * Male Thread			
		MAM : Male Adapter * Male Thread			
		CT : Coning Tool			
		TT : Threading Tool			
		RT : Reseating Tool			

Example

Needle Valve, 60,000 psi, Vee stem, Tube O.D 3/8", Graphite Packing, Angle type, Stainless steel 316 DK60NV-06-A-GF-S

Fitting Cross, 20,000 psi, Tube O.D 3/4", sour Gas, Stainless steel 316 DK20C-12-SG-S

Check Valve, 60,000 psi, O-Ring type, Tube O.D 3/8" Stainless steel 316 DK60CV-06-O-S

Check Valve, 20,000 psi, Ball type, Tube O.D 3/8" Stainless steel 316 DK20CV-06-S

